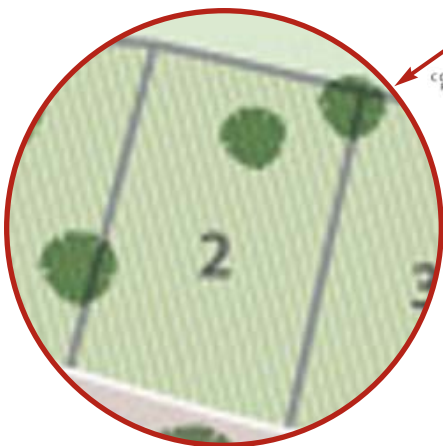




Tilman's Farm offers estate homes in an incredibly beautiful setting in Powhatan County. It is located minutes from Route 288 and Route 60 (Midlothian Turnpike). The Tilman's Farm community will have a large pavilion with a fire pit, a pier for enjoying the water, and walking trails.



(Continued on back)

BUILDER CONTACT:
Rich Napier of Napier Signature Homes
(804) 403-3101 (office) -or- (804) 218-7741 (cell)

AGENT CONTACT:
Jim Simpson of Realty Venture Group
(804) 598-0027

What can we build for you? 

► DIRECTIONS

From the North & West

- 288 South to Huguenot Trail/Robious Road Exit
- Right at light onto Route 711/Huguenot Trail West
- Go 14 minutes until 711 dead ends at US 522/Maidens Road
- Left on US 522
- Go 1/2 mile to Tilman's Farm Entrance on left

From the City & East

- Huguenot Road to Robious Road/US 711 West
- Go 14 minutes until 711 dead ends at US 522/Maidens Road
- Left on US 522
- Go 1/2 mile to Tilman's Farm Entrance on left

From the South

- West on US 60/Midlothian Tnpk, 20 minutes from Huguenot/Courthouse Roads
- Right on US 522/Maiden's Road North for 4 minutes
- Right into Tilman's Farm

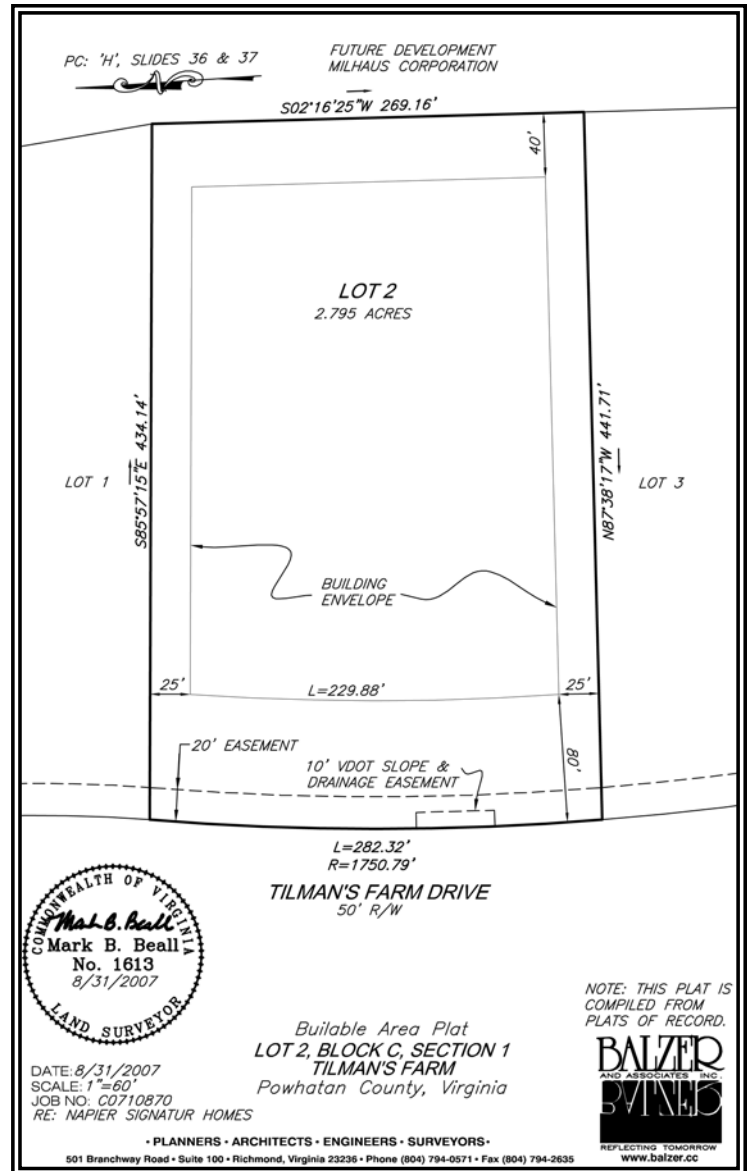
From Route 288 North to Route 60 West

- Route 60 West for 14 minutes
- Right on US 522/Maiden's Road North for 4 minutes
- Right into Tilman's Farm

► SCHOOLS

- Pocahontas Elementary School (Grades K-4)
- Pocahontas Middle School (Grades 5-6)
- Pocahontas Junior High School (Grades 7-8)
- Powhatan High School (Grades 9-12)

In addition, private schools are nearby including Blessed Sacrament Huguenot, a PS-12th Catholic school.



At Napier Signature Homes, we truly are custom.

We understand your dreams, designs and desires for your new home. Our homes are unique works of art — a blend of stunning designs, exceptional craftsmanship and unique features.

Our company's small size and client focus means if you can dream it, Napier Signature Homes can build it.

BUILDER CONTACT:

Rich Napier of Napier Signature Homes
(804) 403-3101 (office) -or- (804) 218-7741 (cell)

AGENT CONTACT:

Jim Simpson of Realty Venture Group
(804) 598-0027

What can we build for you? 