

▶ ABOUT THE LOT

- Lot 50 backs up to a private conservations area.

▶ DIRECTIONS

Directions from North:

- I-95 S to I-195 S/I-64 W exit 79 to Powhite Parkway /Charlottesville
- Take I-195 S exit 186 to Powhite Parkway
- Continue on VA-76 S toward Powhite Parkway (VA-150)/(US-60)/(US-360)
- Take the US-60 exit toward Midlothian
- Bear right at Midlothian
- Turn right at Robious Road
- Turn right at Ashwell Drive

Directions from South:

- I-95 North to 288 North
- Take Huguenot Trail/Robious Road Exit
- Turn left at stop light
- Turn left at Ashwell Drive

Directions from West:

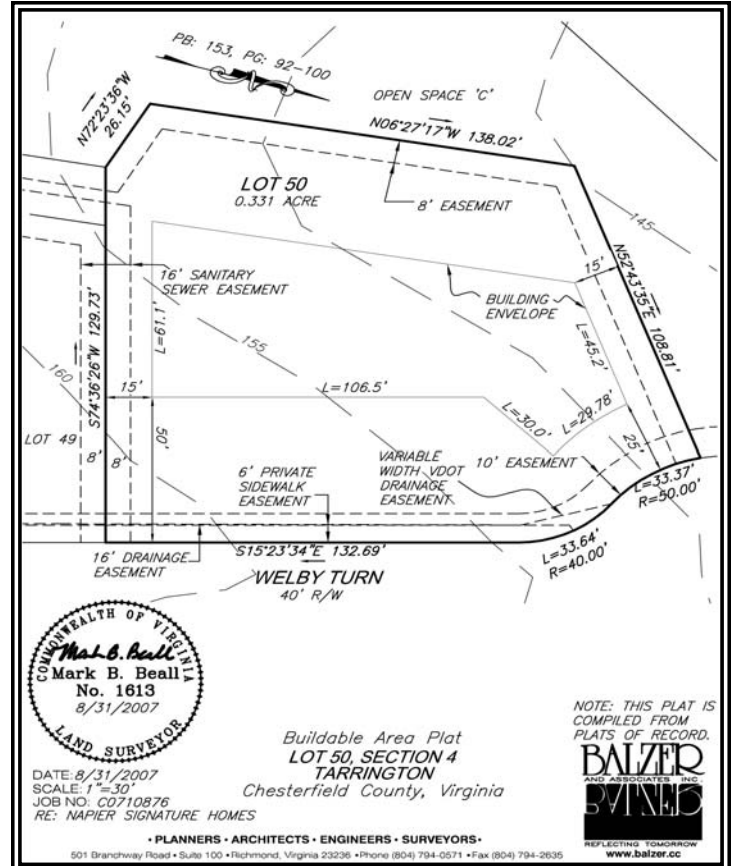
- Take 64 East to 288 South
- Take Huguenot Trail/Robious Road exit
- Turn left at stop light
- Turn left at Ashwell Drive

Directions from East:

- Take 64 West to 288 South
- Take Huguenot Trail/Robious Road exit
- Turn left at stop light
- Turn left at Ashwell Drive

▶ SCHOOLS

- Robious Elementary School
- Robious Middle School
- James River High School



At Napier Signature Homes, we truly are custom.

We understand your dreams, designs and desires for your new home. Our homes are unique works of art — a blend of stunning designs, exceptional craftsmanship and unique features.

Our company's small size and client focus means if you can dream it, Napier Signature Homes can build it.

BUILDER CONTACT:

Rich Napier of Napier Signature Homes
(804) 403-3101 (office) -or- (804) 218-7741 (cell)

AGENT CONTACT:

Lee Rousseau of Realty Ventures Group
(804) 897-9188

What can we build for you? 