

# Napier

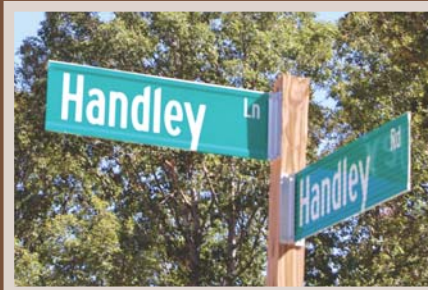
SIGNATURE HOMES

CUSTOM DESIGNER/BUILDER

Tarrington Lot 24, Section 10

.720 acre in Chesterfield County

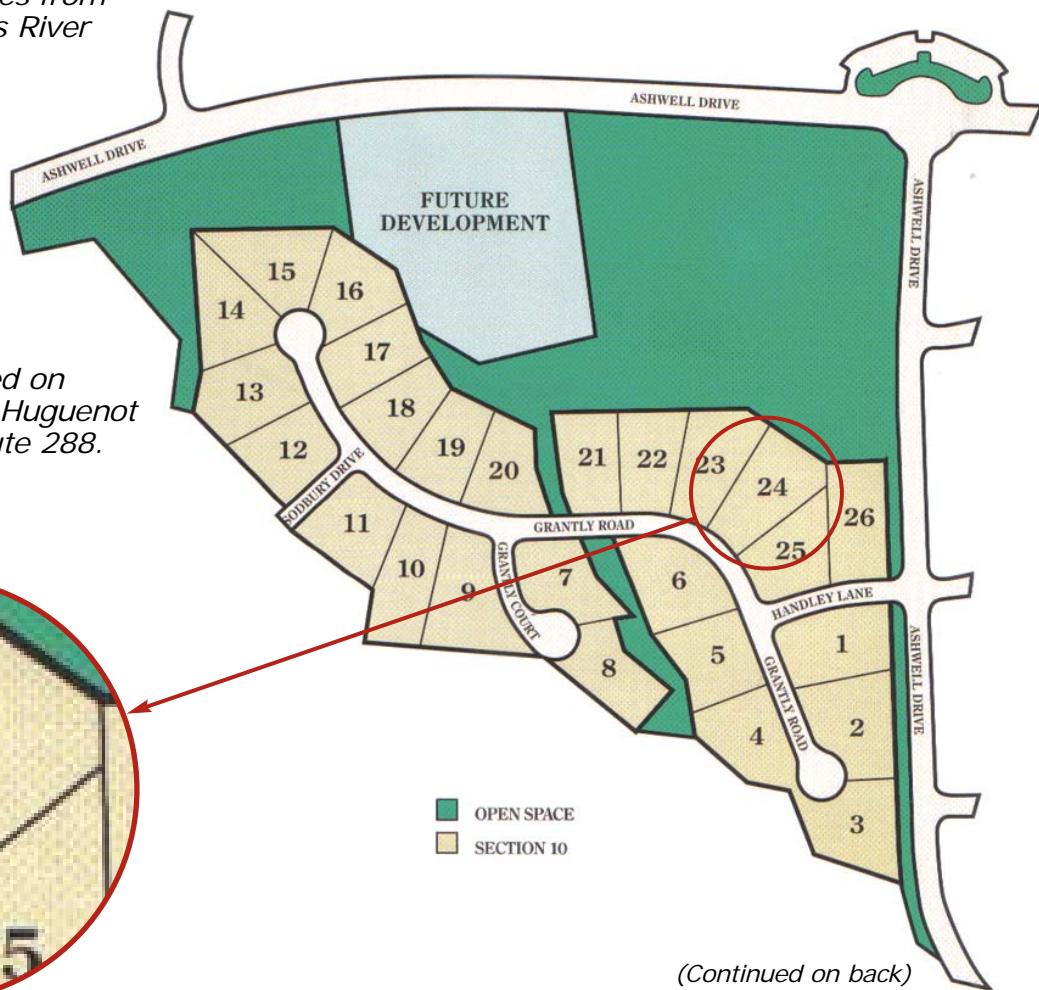
Current lot is available by calling (804) 403-3101



Tarrington is an upscale community developed conveniently located on the James River in Chesterfield County just off Robious Road. It is just minutes from Bettie Weaver Elementary, James River High School and Route 288.

The neighborhood connects to a nearby park and includes an attractive clubhouse, fitness room, outdoor pools and children's play areas. The Homebuilders Association of Richmond named Tarrington its 2007 Community of the Year.

Tarrington on the James is located on Robious Road, two miles west of Huguenot Road and three miles east of Route 288.



(Continued on back)

**BUILDER CONTACT:**

Rich Napier of Napier Signature Homes  
(804) 403-3101 (office) -or- (804) 218-7741 (cell)

**AGENT CONTACT:**

Lee Rousseau of Realty Ventures Group  
(804) 897-9188

What can we build for you? 

View hundreds of photos and access virtual tours of our custom homes at [www.napiersignaturehomes.com](http://www.napiersignaturehomes.com)

All information shown herein is deemed reliable, but is not guaranteed

## ► DIRECTIONS

### Directions from North:

- I-95 S to I-195 S/I-64 W exit 79 to Powhite Parkway /Charlottesville
- Take I-195 S exit 186 to Powhite Parkway
- Continue on VA-76 S toward Powhite Parkway (VA-150)/(US-60)/(US-360)
- Take the US-60 exit toward Midlothian
- Bear right at Midlothian
- Turn right at Robious Road
- Turn right at Ashwell Drive

### Directions from South:

- I-95 North to 288 North
- Take Huguenot Trail/Robious Road Exit
- Turn left at stop light
- Turn left at Ashwell Drive

### Directions from West:

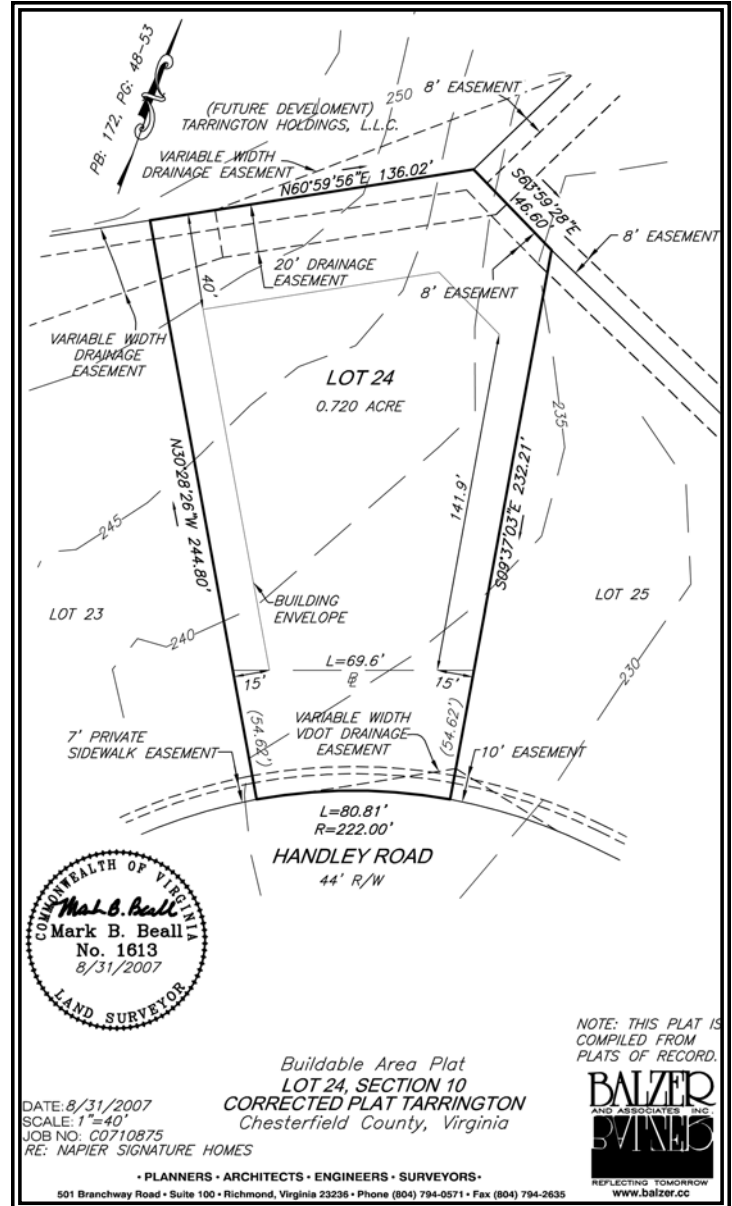
- Take 64 East to 288 South
- Take Huguenot Trail/Robious Road exit
- Turn left at stop light
- Turn left at Ashwell Drive

### Directions from East:

- Take 64 West to 288 South
- Take Huguenot Trail/Robious Road exit
- Turn left at stop light
- Turn left at Ashwell Drive

## ► SCHOOLS

- Robious Elementary School
- Robious Middle School
- James River High School



*At Napier Signature Homes, we truly are custom.*

*We understand your dreams, designs and desires for your new home. Our homes are unique works of art — a blend of stunning designs, exceptional craftsmanship and unique features.*

*Our company's small size and client focus means if you can dream it, Napier Signature Homes can build it.*

### BUILDER CONTACT:

Rich Napier of Napier Signature Homes  
(804) 403-3101 (office) -or- (804) 218-7741 (cell)

### AGENT CONTACT:

Lee Rousseau of Realty Ventures Group  
(804) 897-9188

*What can we build for you?* 