

Sabot Creek Lot 10
2.19 acres at 1636 Sabot Creek Court
Current lot is available by calling (804) 403-3101



Sabot Creek is in the heart of Deep Run Hunt territory on Manakin Road in Goochland County. It includes only 22 exclusive, 2-3 acre home sites, surrounded by a 60-acre wooded preserve.

For walking or riding, a bridal trail will meander through the preserve, connecting equestrian neighborhoods and Deep Run Hunt Club.



BUILDER CONTACT:
Rich Napier of Napier Signature Homes
(804) 403-3101 (office) -or- (804) 218-7741 (cell)

AGENT CONTACT:
John D'Amore of Napier Realtors ERA®
(804) 747-7653

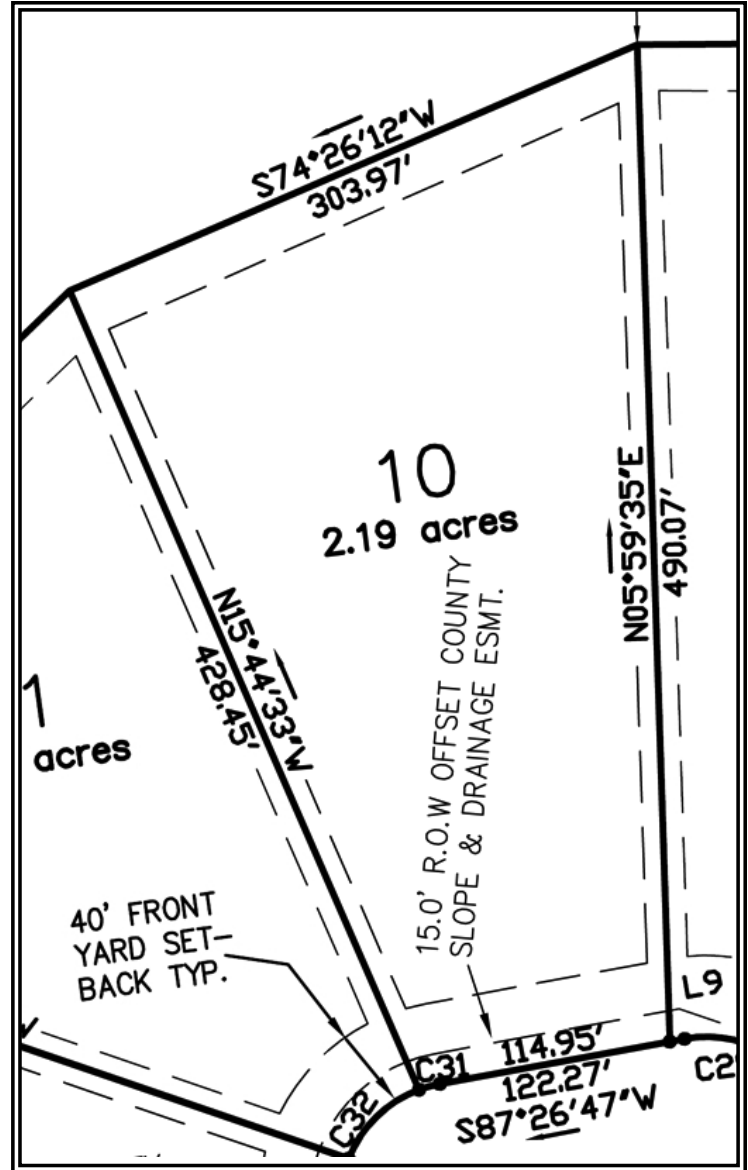
What can we build for you? 

► **DIRECTIONS**

- Just 3 1/2 miles from River Road
- Only 3 1/2 miles from I-64 exit 173 Manakin/Rockville
- Only 15 minutes to Short Pump

► **SCHOOLS**

- Randolph Elementary School
- Goochland Middle School
- Goochland High School



At Napier Signature Homes, we truly are custom.

We understand your dreams, designs and desires for your new home. Our homes are unique works of art — a blend of stunning designs, exceptional craftsmanship and unique features.

Our company's small size and client focus means if you can dream it, Napier Signature Homes can build it.

BUILDER CONTACT:

Rich Napier of Napier Signature Homes
(804) 403-3101 (office) -or- (804) 218-7741 (cell)

AGENT CONTACT:

John D'Amore of Napier Realtors ERA®
(804) 747-7653

What can we build for you? 