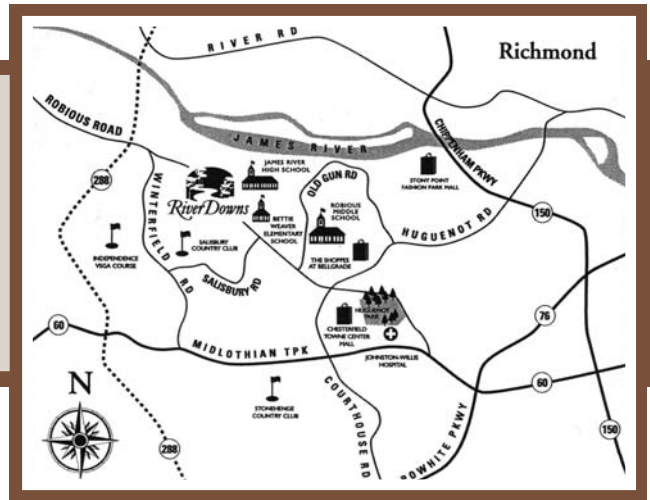


# Napier

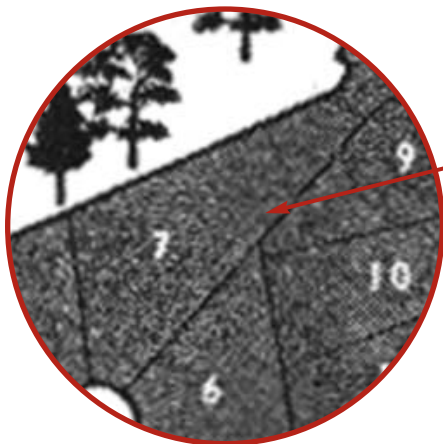
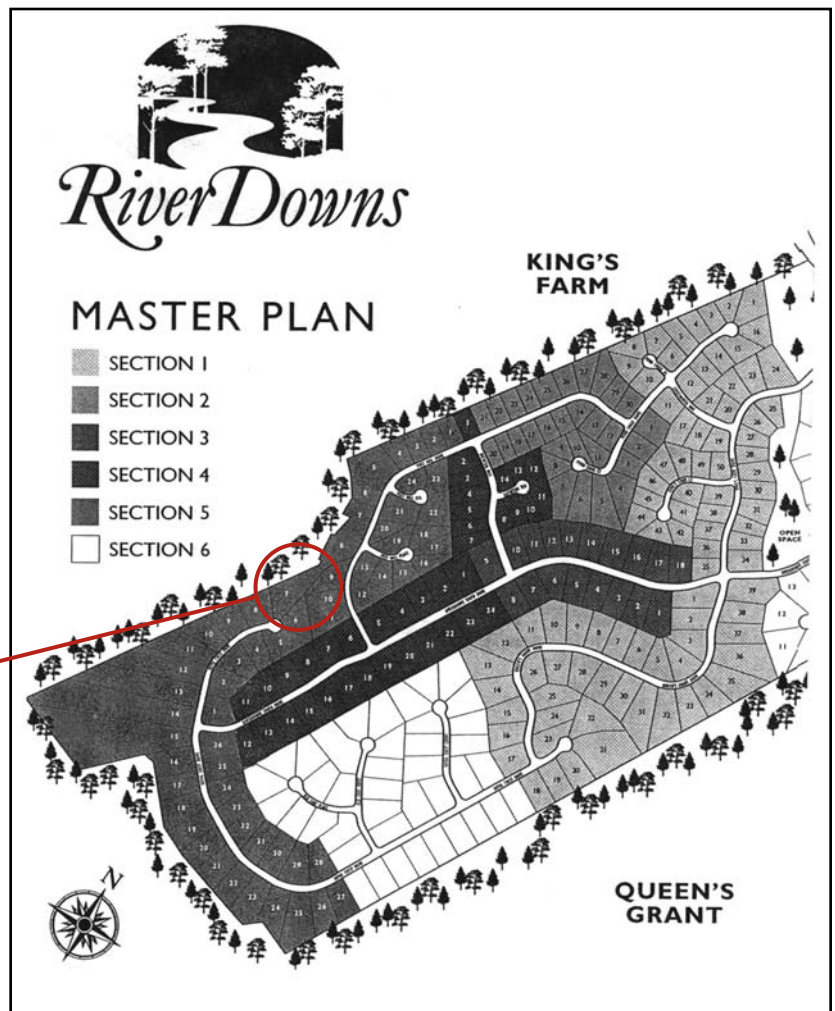
SIGNATURE HOMES

CUSTOM DESIGNER/BUILDER

**Riverdowns Lot 7, Section 5**  
**1.252 acre in Chesterfield County**  
Current lot is available by calling (804) 403-3101



*Riverdowns is a single-family home community conveniently located just off Robious Road in Chesterfield County just minutes from Betty Weaver Elementary, James River High School and Route 288.*



**BUILDER CONTACT:**  
Rich Napier of Napier Signature Homes  
(804) 403-3101 (office) -or- (804) 218-7741 (cell)

**AGENT CONTACT:**  
Helen McCallum of C. Porter Vaughan, Inc.  
(804) 594-7201

*What can we build for you?*

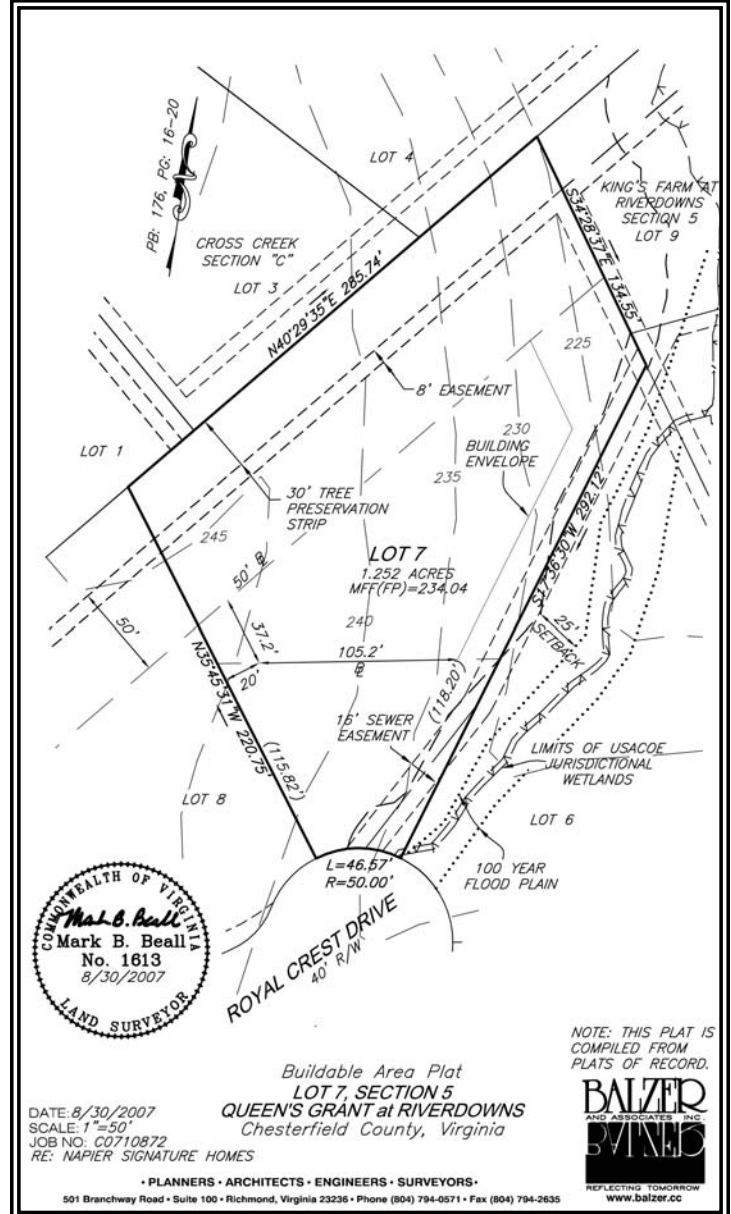
View hundreds of photos and access virtual tours of our custom homes at [www.napiersignaturehomes.com](http://www.napiersignaturehomes.com)  
All information shown herein is deemed reliable, but is not guaranteed

► **DIRECTIONS**

- From Huguenot Road travel west on Robious Road past Riverton
- Turn left on Riversdown Drive

► **SCHOOLS**

- Bettie Weaver Elementary School
- Robious Middle School
- James River High School



*At Napier Signature Homes, we truly are custom.*

*We understand your dreams, designs and desires for your new home. Our homes are unique works of art — a blend of stunning designs, exceptional craftsmanship and unique features.*

*Our company's small size and client focus means if you can dream it, Napier Signature Homes can build it.*

**BUILDER CONTACT:**

Rich Napier of Napier Signature Homes  
(804) 403-3101 (office) -or- (804) 218-7741 (cell)

**AGENT CONTACT:**

Helen McCallum of C. Porter Vaughan, Inc.  
(804) 594-7201

*What can we build for you?* 