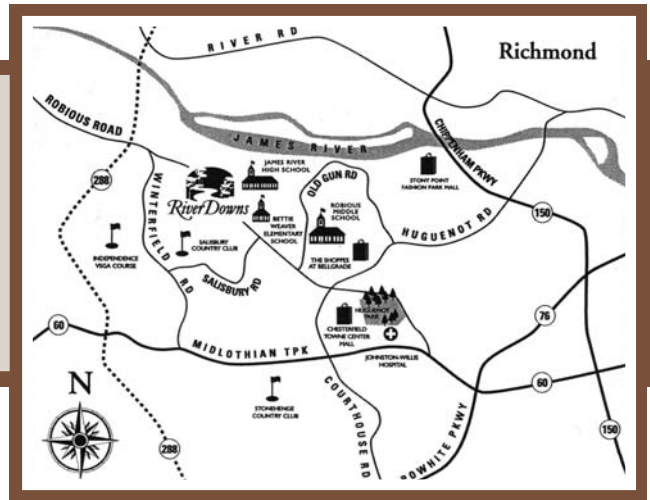


Napier

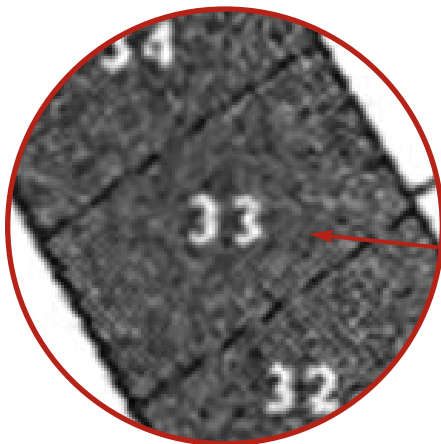
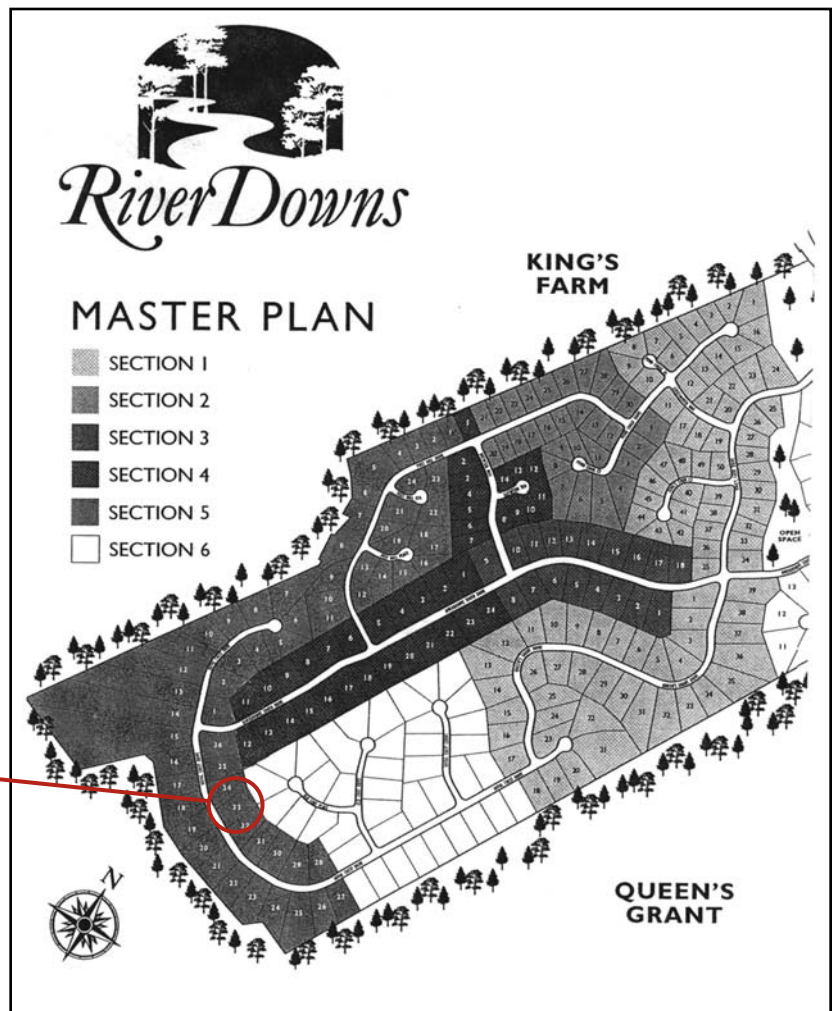
SIGNATURE HOMES

CUSTOM DESIGNER/BUILDER

Riverdowns Lot 33, Section 5
.986 acre in Chesterfield County
Current lot is available by calling (804) 403-3101



Riverdowns is a single-family home community conveniently located just off Robious Road in Chesterfield County just minutes from Betty Weaver Elementary, James River High School and Route 288.



BUILDER CONTACT:
Rich Napier of Napier Signature Homes
(804) 403-3101 (office) -or- (804) 218-7741 (cell)

AGENT CONTACT:
Helen McCallum of C. Porter Vaughan, Inc.
(804) 594-7201

What can we build for you? 

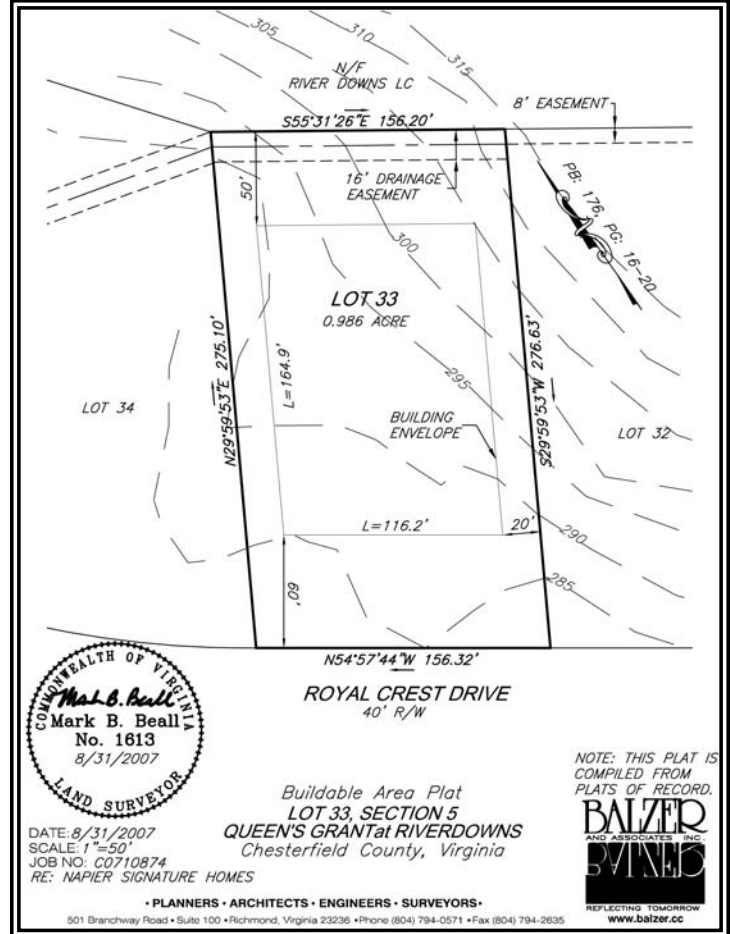
View hundreds of photos and access virtual tours of our custom homes at www.napiersignaturehomes.com
All information shown herein is deemed reliable, but is not guaranteed

► **DIRECTIONS**

- From Huguenot Road travel west on Robious Road past Riverton
- Turn left on Riversdown Drive

► **SCHOOLS**

- Bettie Weaver Elementary School
- Robious Middle School
- James River High School



At Napier Signature Homes, we truly are custom.

We understand your dreams, designs and desires for your new home. Our homes are unique works of art — a blend of stunning designs, exceptional craftsmanship and unique features.

Our company's small size and client focus means if you can dream it, Napier Signature Homes can build it.

BUILDER CONTACT:

Rich Napier of Napier Signature Homes
(804) 403-3101 (office) -or- (804) 218-7741 (cell)

AGENT CONTACT:

Helen McCallum of C. Porter Vaughan, Inc.
(804) 594-7201

What can we build for you? 